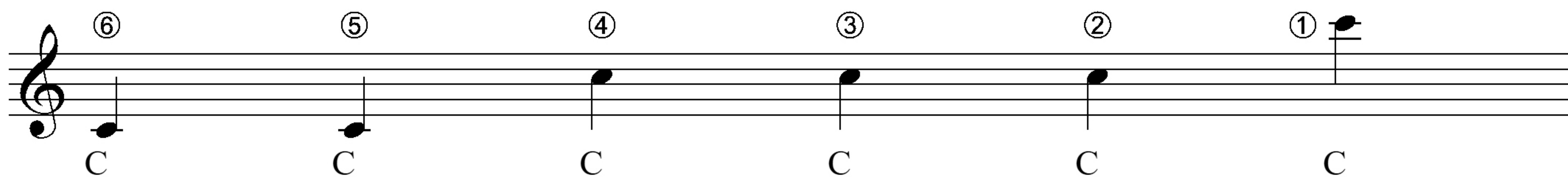


BUILDING A SOLID MUSICAL FOUNDATION

12 STEPS FOR GUITARISTS

STEP 1



STEP 2

Step 2 musical notation, showing three staves with fingerings and notes. The notes are C, C#, C, and D, with fingerings 1, 2, 1, and 3 respectively. The notation includes a treble clef and a key signature of one sharp (F#).

Staff 1 (Top):

- Measure 1: ⑥ (Fingering 6) above the staff, spanning measures 1-4.
- Measure 2: ⑤ (Fingering 5) above the staff, spanning measures 5-8.

Staff 2 (Middle):

- Measure 1: ④ (Fingering 4) above the staff, spanning measures 1-4.
- Measure 2: ③ (Fingering 3) above the staff, spanning measures 5-8.

Staff 3 (Bottom):

- Measure 1: ② (Fingering 2) above the staff, spanning measures 1-4.
- Measure 2: ① (Fingering 1) above the staff, spanning measures 5-8.

Notes and Fingerings:

- Measure 1: 1 C, 2 C#, 1 C, 3 D
- Measure 2: 1 C, 2 C#, 1 C, 3 D

STEP 3

Tone Tone Semitone Tone Tone Tone Semitone

⑥

C D E F G A B C

⑤

C D E F G A B C

④

C D E F G A B C

③

C D E F G A B C

②

C D E F G A B C

①

C D E F G A B C

STEP 4

Diagram illustrating the construction of the C major scale using intervals (Tone and Semitone) across six staves, showing the sequence of notes (C, D, E, F, G, A, B, C) and the corresponding fingerings (1-4) for each note.

The diagram shows the C major scale constructed step-by-step across six staves. Each staff represents a stage in the process, with intervals and fingerings indicated above the notes.

Staff 1: Shows the initial construction with intervals: C to D (Tone), D to E (Tone), E to F (Semitone), F to G (Tone), G to A (Tone), A to B (Tone), and B to C (Semitone). Fingerings are 2 for C, 4 for D, 1 for E, 2 for F, 4 for G, 1 for A, 3 for B, and 4 for C.

Staff 2: Shows the construction of the first octave (C to G) with intervals: C to D (Tone), D to E (Tone), E to F (Semitone), F to G (Tone). Fingerings are 2 for C, 4 for D, 1 for E, 2 for F, and 4 for G.

Staff 3: Shows the construction of the second octave (A to C) with intervals: A to B (Tone), B to C (Semitone). Fingerings are 1 for A, 3 for B, and 4 for C.

Staff 4: Shows the construction of the third octave (C to G) with intervals: C to D (Tone), D to E (Tone), E to F (Semitone), F to G (Tone). Fingerings are 2 for C, 4 for D, 1 for E, 2 for F, and 4 for G.

Staff 5: Shows the construction of the fourth octave (A to C) with intervals: A to B (Tone), B to C (Semitone). Fingerings are 1 for A, 3 for B, and 4 for C.

Staff 6: Shows the final construction of the fifth octave (C to G) with intervals: C to D (Tone), D to E (Tone), E to F (Semitone), F to G (Tone). Fingerings are 2 for C, 4 for D, 1 for E, 2 for F, and 4 for G.

STEP 5

Root Major 3rd Perfect 5th

The image displays five musical staves, each representing a different fingering pattern for a C major triad (C-E-G) on a guitar fretboard. The notes are positioned at the 2nd, 1st, and 4th frets respectively. The fingerings are indicated by circled numbers above the notes: 6-5-4, 5-4-3, 4-3-2, 3-2-1, and 2-1-0. The first staff includes additional labels: 'Root' above the C note, 'Major 3rd' above the E note, and 'Perfect 5th' above the G note. Each staff begins with a treble clef and a C-clef on the first line.

Fingering	Root (C)	Major 3rd (E)	Perfect 5th (G)
6-5-4	2nd fret	1st fret	4th fret
5-4-3	2nd fret	1st fret	4th fret
4-3-2	2nd fret	1st fret	4th fret
3-2-1	2nd fret	1st fret	4th fret
2-1-0	2nd fret	1st fret	4th fret

STEP 6

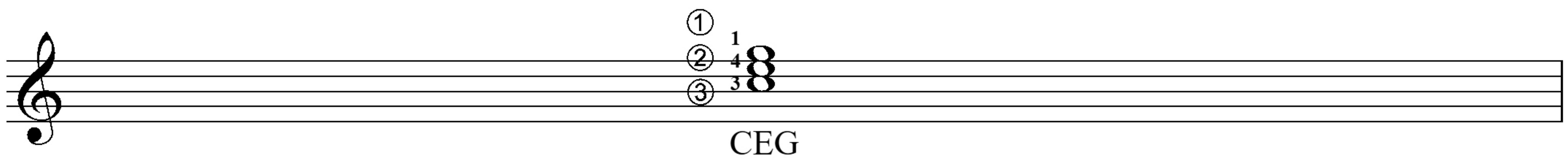
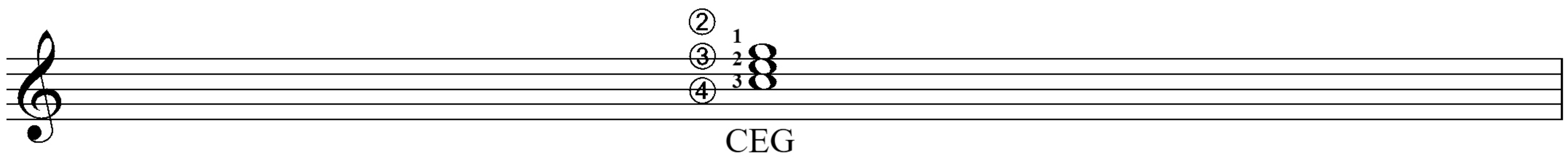
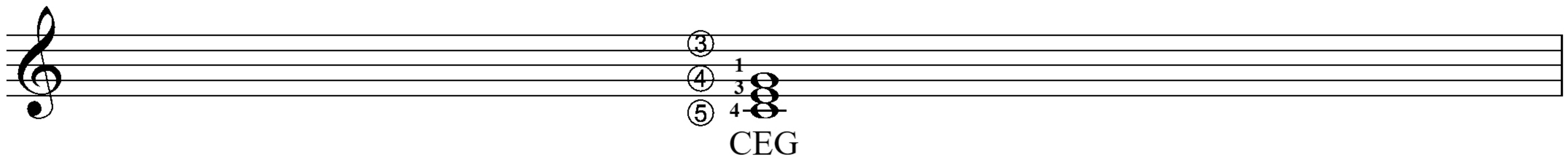
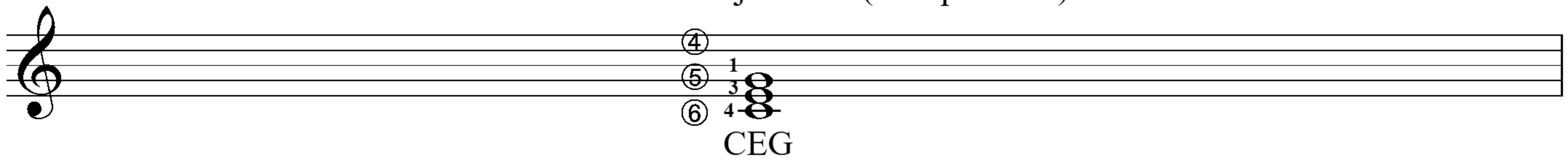
Augmented Major Minor Diminished

The exercises are organized into five rows and four columns, each representing a different triad type: Augmented, Major, Minor, and Diminished. Each exercise is written on a single staff with a treble clef and a key signature of one sharp (F#). The exercises progress from whole notes to eighth notes, quarter notes, and finally sixteenth notes with a triplet. Fingerings are indicated by numbers 1-4 in circles. The notes are C, E, G# for Augmented; C, E, G for Major; C, Eb, G for Minor; and C, Eb, Gb for Diminished.

Row	Augmented	Major	Minor	Diminished
1	Whole note: C (2), E (1), G# (4)	Whole note: C (2), E (1), G (4)	Whole note: C (2), Eb (1), G (4)	Whole note: C (3), Eb (1), Gb (4)
2	Half note: C (2), E (1), G# (4)	Half note: C (2), E (1), G (4)	Half note: C (2), Eb (1), G (4)	Half note: C (3), Eb (1), Gb (4)
3	Quarter note: C (2), E (1), G# (4)	Quarter note: C (2), E (1), G (4)	Quarter note: C (2), Eb (1), G (4)	Quarter note: C (3), Eb (1), Gb (4)
4	Eighth note: C (1), E (2), G# (4)	Eighth note: C (1), E (2), G (4)	Eighth note: C (2), Eb (1), G (4)	Eighth note: C (2), Eb (1), Gb (4)
5	Sixteenth note: C (1), E (1), G# (4)	Sixteenth note: C (1), E (1), G (4)	Sixteenth note: C (2), Eb (1), G (4)	Sixteenth note: C (2), Eb (1), Gb (4)

STEP 7

C major triad (root position)



STEP 8

7

C Augmented	C Major	C minor	C Diminished
 CEG#	 CEG	 CEbG	 CEbGb
 CEG#	 CEG	 CEbG	 CEbGb
 CEG#	 CEG	 CEbG	 CEbGb
 CEG#	 CEG	 CEbG	 CEbGb

STEP 9

8

C Dm Em F G Am B° C

CEG DFA EGB FAC GBD ACE BDF CEG

Root on ⑥

C Dm Em F G Am B° C

CEG DFA EGB FAC GBD ACE BDF CEG

Root on ⑤

C Dm Em F G Am B° C

CEG DFA EGB FAC GBD ACE BDF CEG

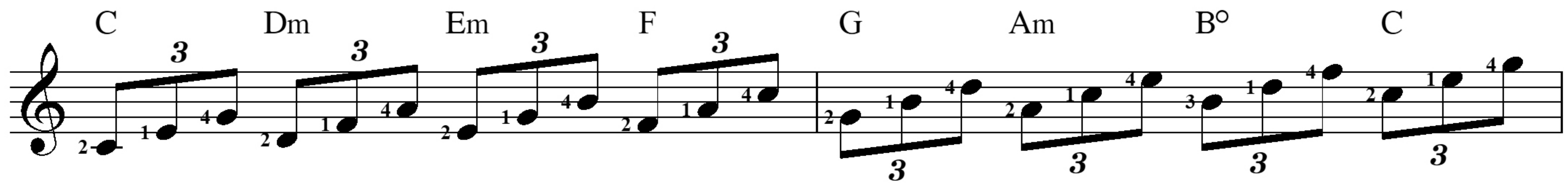
Root on ④

C Dm Em F G Am B° C

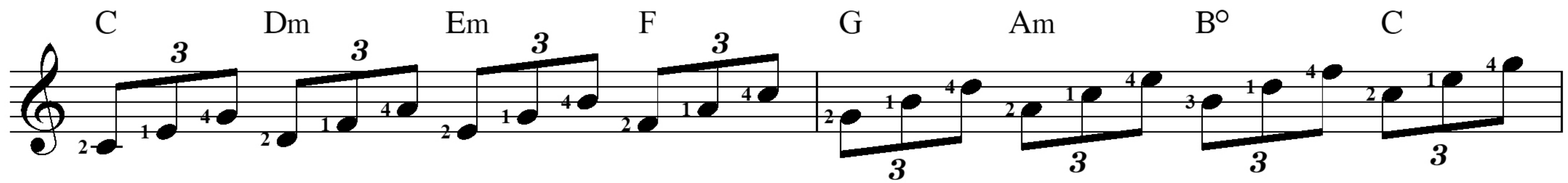
CEG DFA EGB FAC GBD ACE BDF CEG

Root on ③

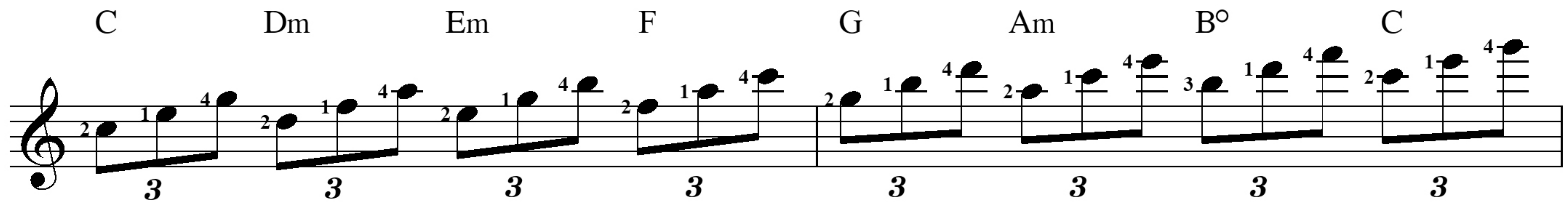
STEP 10



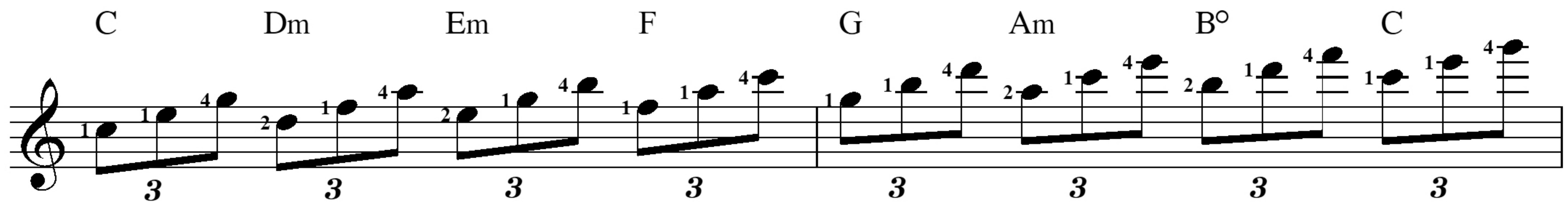
Root on ⑥



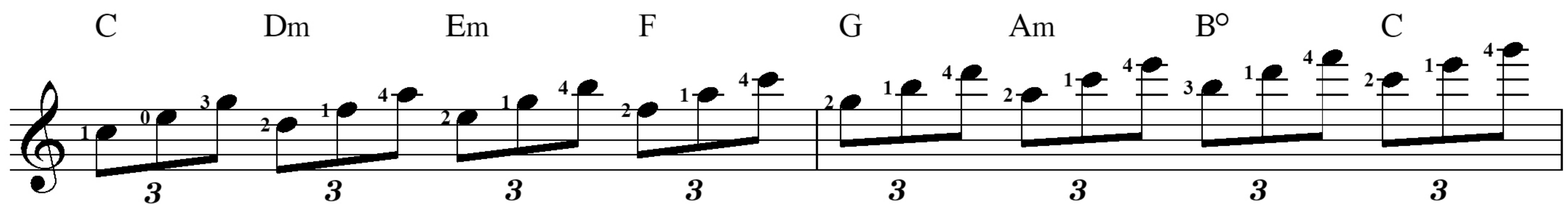
Root on ⑤



Root on ④



Root on ③



Root on ②

STEP 11

Diagram 1: Chord shapes for C, Dm, Em, F, G, Am, B°, and C on a six-string guitar. Fingerings are indicated by circled numbers 1-4.

Chord	Fingerings
C	4 (G), 5 (B), 6 (C)
Dm	4 (D), 5 (F), 6 (A)
Em	3 (E), 4 (G), 5 (B)
F	3 (F), 4 (A), 5 (C)
G	3 (G), 4 (B), 5 (D)
Am	2 (A), 3 (C), 4 (E)
B°	2 (B), 3 (D), 4 (F)
C	2 (G), 3 (B), 4 (C)

Diagram 2: Chord shapes for C, Dm, Em, F, G, Am, B°, and C on a six-string guitar. Fingerings are indicated by circled numbers 1-4 and 0 (open).

Chord	Fingerings
C	3 (G), 4 (open), 5 (B)
Dm	3 (D), 4 (F), 5 (A)
Em	2 (E), 3 (open), 4 (B)
F	2 (F), 3 (A), 4 (C)
G	2 (G), 3 (B), 4 (D)
Am	1 (A), 2 (open), 3 (C)
B°	1 (B), 2 (D), 3 (F)
C	1 (G), 2 (B), 3 (C)

Diagram 3: Chord shapes for C, Dm, Em, F, G, Am, B°, and C on a six-string guitar. Fingerings are indicated by circled numbers 1-4.

Chord	Fingerings
C	2 (G), 3 (B), 4 (C)
Dm	2 (D), 3 (F), 4 (A)
Em	1 (E), 2 (G), 3 (B)
F	1 (F), 2 (A), 3 (C)
G	1 (G), 2 (B), 3 (D)
Am	1 (A), 2 (C), 3 (E)
B°	1 (B), 2 (D), 3 (F)
C	1 (G), 2 (B), 3 (C)

STEP 12

